

Discovery Days 2025

BUILDING A MINDSET FOR LEADERSHIP SESSION SELECTION GUIDE

**BEFORE REGISTERING, REVIEW THIS SESSION SELECTION GUIDE. IT IS
BROKEN INTO JUNE 4TH & JUNE 5TH OPTIONS.**

**WEDNESDAY, JUNE 4: YOU WILL NEED TO CHOOSE TWO SPARK SESSIONS FROM THE
AVAILABLE OPTIONS.**

THURSDAY, JUNE 5: THERE ARE TWO TYPES OF SESSIONS TO CHOOSE FROM:

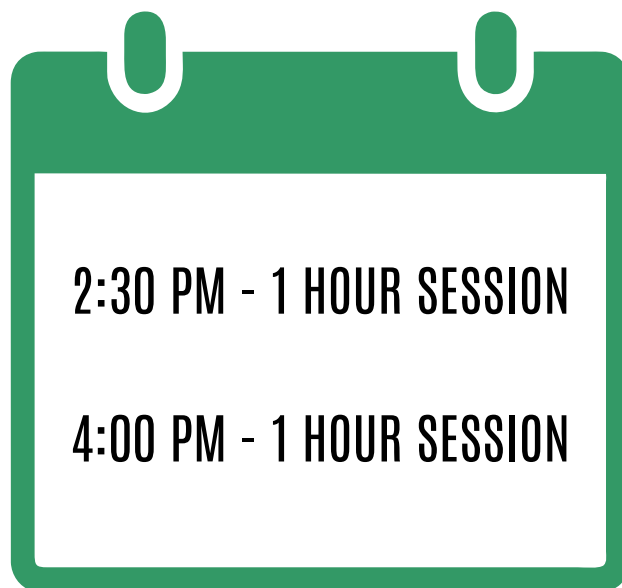
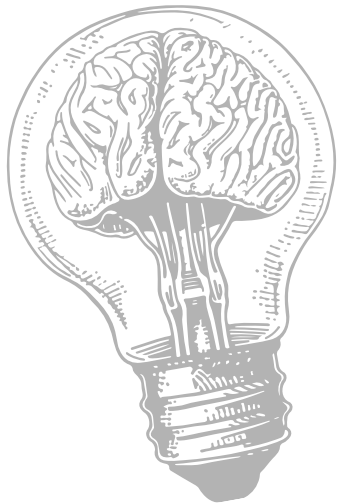
1.5-HOUR SESSIONS: THESE ARE SHORTER SESSIONS THAT ARE SCHEDULED TWICE
IN THE MORNING AND TWICE IN THE AFTERNOON.

HALF-DAY SESSIONS: THESE SESSIONS ARE LONGER AND TAKE UP HALF THE DAY.

IMPORTANT NOTE: WHEN YOU'RE CHOOSING YOUR SESSIONS FOR THURSDAY, YOU
CANNOT SELECT BOTH 1.5-HOUR SESSIONS AND HALF-DAY SESSIONS THAT OCCUR
AT THE SAME TIME. FOR EXAMPLE, IF YOU PICK A 1.5-HOUR SESSION IN THE
MORNING, YOU CANNOT SELECT A HALF-DAY SESSION FOR THE SAME MORNING TIME
SLOT. YOU WILL NEED TO CHOOSE EITHER 1.5-HOUR SESSIONS OR HALF-DAY
SESSIONS, BUT NOT BOTH FOR THE SAME TIME SLOT.



JUNE 4TH SPARK SESSIONS FOR YOUTH



JUNE 5TH SESSION OPTIONS FOR YOUTH

PLEASE REFERENCE BELOW THE DIFFERENT OPTIONS AVAILABLE WHEN SELECTING YOUR SESSIONS FOR JUNE 5TH.

OPTION 1

8:30AM - 1.5 HOUR SESSION
10:15AM - 1.5 HOUR SESSION
LUNCH
1:15 PM - 1.5 HOUR SESSION
3:00 PM - 1.5 HOUR SESSION

OR

OPTION 2

8:30AM - 1.5 HOUR SESSION
10:15AM - 1.5 HOUR SESSION
LUNCH
1:15 PM - HALF DAY SESSION

OR

OPTION 3

8:30AM - HALF DAY SESSION
LUNCH
1:15 PM - 1.5 HOUR SESSION
3:00 PM - 1.5 HOUR SESSION

OR

OPTION 4

8:30AM - HALF DAY SESSION
LUNCH
1:15 PM - HALF DAY SESSION



SPARK SESSION OPTIONS

Discovery Days 2025

WED. JUNE 4TH

1HR SESSIONS

GROWING WITH ALPHA OF CLOVIA

ALPHA OF CLOVIA IS A UNIQUE ALL-FEMALE LIVING AND LEARNING ENVIRONMENT FOR UNDERGRADUATE STUDENTS AT K-STATE, LOCATED JUST A BLOCK OFF-CAMPUS WITH ORIGINS IN 4-H. WE ARE AN APPROVED LIVING COMMUNITY THAT MEETS THE FIRST-YEAR RESIDENCY EXEMPTION, MEANING OUR MEMBERS GET TO LIVE IN-HOUSE STARTING THEIR FRESHMAN YEAR. SINCE 1931, OUR MEMBERS HAVE EMBRACED THE IDEALS OF SISTERHOOD, ACCOUNTABILITY, SINCERITY, AND GROWTH. CLOVIA GIVES WOMEN THE OPPORTUNITY TO GROW THEIR LEADERSHIP AND PERSONAL SKILLS WHILE MAKING FRIENDSHIPS THAT LAST A LIFETIME!

JOIN US AT THE CLOVIA HOUSE FOR AN INFORMATIONAL SESSION, CONNECTIONS WITH CURRENT MEMBERS, AND TO BUILD TERRARIUMS! ALL FEMALE 4-HERS ARE WELCOME AND ENCOURAGED TO COME LEARN OF THE OPPORTUNITIES CLOVIA COULD PROVIDE IN YOUR FUTURE.

BIRD WATCHING-MERLIN AND OTHER COOL NATURE APPS

MINIMUM- 5 MAXIMUM- 24

450 BIRD SPECIES HAVE BEEN FOUND IN KANSAS. MERLIN IS A GREAT CITIZEN SCIENCE TOOL USED TO IDENTIFY AND DOCUMENT BIRDS. TABLETS WILL BE PROVIDED FOR STUDENT USE. STUDENTS WILL ID BIRDS USING MOUNTS, PHOTOS SET UP ALONG A NATURE HIKE, ANY LIVE BIRDS WITNESSED ON KSU CAMPUS, AND USING BIRD SONG CALLS. AS TIME ALLOWS, WE WILL DELVE INTO SOME OTHER GREAT APPS LIKE INATURALIST, SEEK, AND STAR CHART.

LET'S VACATION AT A NATIONAL PARK

DURING THIS SESSION, STUDENTS WILL LEARN ABOUT THE WONDERFUL VARIETY OF NATIONAL PARKS AND OTHER PROTECTED AREAS IN THE UNITED STATES.

K-STATE
Research and Extension



KANSAS YOUTH LEADERSHIP FORUM 101 & STATE 4-H YOUTH COUNCIL APPLICATIONS

SLIDESHOW PRESENTATION FROM THE KYLF COMMITTEE FROM THE K4-HYLC AND AN INTERACTIVE ACTIVITY. WE WILL ANSWER ANY QUESTIONS PERTAINING TO APPLICATIONS FOR COUNCIL AND THE KYLF WEEKEND.

GETTING HANDS-ON HORTICULTURE

MINIMUM- 10 MAXIMUM- 30

IN "GETTING HANDS-ON HORTICULTURE" STUDENTS WILL ROTATE THROUGH STATIONS WORKING DIRECTLY WITH PLANTS. STUDENTS WILL TOUR THE GREENHOUSE FACILITY AND GARDENS ON K-STATE'S MANHATTAN CAMPUS AND EXPLORE VARIOUS CAREERS IN HORTICULTURE SUCH AS FLORICULTURE, GREENHOUSE MANAGEMENT AND NURSERY PRODUCTION.

COVER LETTERS, RESUMES AND SCHOLARSHIP APPS, OH MY!

WHETHER YOUR GOAL IS TO WIN A STATE 4-H PROJECT AWARD, PAY FOR COLLEGE OR GET A JOB, YOU NEED TO KNOW HOW TO SET YOURSELF APART AND HIGHLIGHT YOUR UNIQUE QUALIFICATIONS TO BE SUCCESSFUL IN THE APPLICATION PROCESS. LEARN HOW TO WRITE PROFESSIONAL, ATTENTION-GETTING COVER LETTERS, RESUMES AND ESSAYS TO MAKE YOU STAND OUT FROM THE COMPETITION AND HAVE YOUR BEST CHANCE TO WIN THAT AWARD, SCHOLARSHIP OR CAREER OPPORTUNITY.

IMPROV-ING LEADERSHIP

MINIMUM- 10 MAXIMUM- 40

LEADERSHIP IS A PRACTICE, NOT A POSITION. THIS LESSON WILL TEACH HOW TO TEMPERATURE CHECK YOUR TEAM AND IMPROVE COMMUNICATION, PARTICIPATION, POSITIVITY, AND COLLABORATION; ALL WHILE FLYING BY THE SEAT OF YOUR PANTS!

K-STATE SHEEP & MEAT GOAT UNIT TOUR

MAXIMUM- 25

HAVE YOU HERD?!! OLD MCDONALD GOT A NEW FARM AND ITS FULL OF SHEEP AND GOATS! JOIN US AND TOUR OLD MCDONALD'S, I MEAN K-STATE'S, SHEEP AND MEAT GOAT UNIT, AND SEE WHAT OPPORTUNITIES AWAIT AT K-STATE. WE WILL TAKE A PEAK AT WHAT GOES ON AT THE UNIT AS WELL AS WHAT OTHER OPPORTUNITIES ARE ASSOCIATED WITH IT. SO JOIN US ON THIS FUN FARM TOUR AND LEARN WHAT GOES ON AT THE K-STATE SHEEP AND MEAT GOAT UNIT!



KANSAS DEPARTMENT OF WILDLIFE & PARKS GAME WARDEN K9 UNITS

THIS WORKSHOP WILL EDUCATE STUDENTS ON CONSERVATION LAW ENFORCEMENT IN KANSAS. KANSAS GAME WARDENS AND THEIR K9 PARTNERS WILL TALK ABOUT CAREER OPPORTUNITIES AND COMPLETE DEMONSTRATIONS WITH THEIR K9 PARTNERS.

CRAFTING COMPELLING NARRATIVES: MASTERING MOBILE PHOTOGRAPHY FOR STORYTELLING AND EDUCATION

MINIMUM- 5 MAXIMUM- 25

IN THIS SESSION, STUDENTS WILL LEARN HOW TO USE NEW FEATURES ON THEIR MOBILE DEVICE CAMERAS, EXPLORE KEY PHOTOGRAPHY PRINCIPLES, AND UNDERSTAND HOW PHOTOGRAPHY IS USED IN COMMUNICATION AND EDUCATION. THEY WILL THEN APPLY THESE SKILLS BY CAPTURING THEIR OWN PHOTOS AROUND CAMPUS TO TELL A STORY.

ALL THINGS COLLEGE

CALLING ALL HIGH SCHOOLERS OR DELEGATES WHO WOULD LIKE TO LEARN MORE ABOUT COLLEGE LIFE. IN THIS SESSION YOU WILL LEARN THE IN'S AND OUT'S OF APPLYING FOR COLLEGE, SCHOLARSHIPS, NECESSITIES FOR DORM LIFE, AND MORE. AS WELL AS TIME DURING THE SESSION FOR ANY AND ALL QUESTIONS YOU MAY HAVE FOR CURRENT COLLEGE STUDENTS WHO ATTEND COLLEGE BOTH IN AND OUT OF STATE.

SOCIAL JUSTICE MOVEMENTS IN THE US

CALLING ALL HIGH SCHOOLERS OR DELEGATES WHO WOULD LIKE TO LEARN MORE ABOUT COLLEGE LIFE. IN THIS SESSION YOU WILL LEARN THE IN'S AND OUT'S OF APPLYING FOR COLLEGE, SCHOLARSHIPS, NECESSITIES FOR DORM LIFE, AND MORE. AS WELL AS TIME DURING THE SESSION FOR ANY AND ALL QUESTIONS YOU MAY HAVE FOR CURRENT COLLEGE STUDENTS WHO ATTEND COLLEGE BOTH IN AND OUT OF STATE.



AGRONOMY: GROWING THE FUTURE

EXPLORE HOW AGRONOMY COMBINES SCIENCE, TECHNOLOGY, AND PROBLEM-SOLVING TO FEED THE WORLD AND PROTECT THE ENVIRONMENT. GET HANDS-ON WITH CROPS, RANGE SCIENCE, PRECISION AG, AND SOIL AND ENVIRONMENTAL SCIENCES WHILE DISCOVERING MAJORS, CAREERS, AND OPPORTUNITIES AT K-STATE'S AGRONOMY DEPARTMENT.

THE PHYSICS DEMO SHOW: SEE NATURE'S RULES IN ACTION

MINIMUM- 5 MAXIMUM- 150

WE WILL SET UP MANY DEMONSTRATIONS THAT STUDENTS WILL HAVE A CHANCE TO DO: ROCKET SLEDS, RIDING A GYROSCOPE, TOUCHING 30,000 VOLTS, FUN WITH LIQUID NITROGEN, ... THERE MAY BE EXPLOSIONS.

PREPARE TO BE A WILDCAT WITH PRE-COLLEGE PATHWAYS

ARE YOU INTERESTED IN BEING A WILDCAT? LEARN ABOUT PRE-COLLEGE OPPORTUNITIES THAT YOU CAN PARTICIPATE IN WHILE IN COLLEGE AND GET A JUMPSTART ON YOUR DEGREE PLAN.

BYB - BE YOUR BEST

MINIMUM- 10 MAXIMUM- 30

BYB: BE. YOUR. BEST! HOW CAN YOU ACHIEVE PERSONAL SUCCESS? EXPLORE SKILLS THAT THE MOST SUCCESSFUL PROFESSIONALS HAVE MASTERED. SET YOURSELF UP FOR THE BEST HIGH SCHOOL AND COLLEGE EXPERIENCE POSSIBLE! GET SET, LEARN THE SECRET SKILLS, AND BYB!



KICKSTART YOUR CAREER WITH RKAP

MINIMUM- 10 MAXIMUM- 40

LEARN ABOUT KANSAS FARM BUREAU'S NEWEST OPPORTUNITIES WITH RURAL KANSAS APPRENTICESHIP PROGRAMS. WE'LL SHARE HOW YOU CAN EXPERIENCE THE BEST OF BOTH THE COLLEGE AND WORKING WORLDS AS AN APPRENTICE. EARN A PAYCHECK WHILE YOU LEARN IN AN APPRENTICESHIP OPPORTUNITY THROUGH MENTORSHIP, ON THE JOB LEARNING AND HANDS ON EXPERIENCES THAT WILL SET YOU UP FOR A SUCCESSFUL CAREER IN THE FIELD OF WORK YOU WANT TO BE IN.

EXPERIENCE THE WORLD THROUGH 4-H INTERNATIONAL EXCHANGES

\$1 FEE

HAVE YOU EVER WONDERED WHAT IT WOULD BE LIKE TO HAVE A SECOND HOME ON THE OTHER SIDE OF THE GLOBE? ... AND A SECOND FAMILY WHO CARES ABOUT YOU COMES WITH IT? BOTH OF THOSE THINGS HAPPEN ALL THE TIME WITH 4-H INTERNATIONAL EXCHANGES. IN THIS WORKSHOP YOU WILL LEARN ABOUT ONE- AND TWO-MONTH EXCHANGES FOR TEENS TO ARGENTINA, COSTA RICA, JAPAN, KOREA, NORWAY, AND TAIWAN. PAST EXCHANGE PARTICIPANTS TO JAPAN AND NORWAY WILL SHARE WHAT THEIR EXPERIENCES WERE LIKE WITH SLIDE SHOWS, FOOD PREPARATION AND SAMPLING, AND TRYING SOME CRAFTS AND GAMES. YOU WILL LEARN ABOUT THE 4-H AND OTHER YOUTH PROGRAMS OF OUR HOSTS AND WHAT ELSE TEENS DO IN THEIR FREE TIME. BEFORE WE'RE DONE, YOU'LL KNOW HOW YOU CAN GO ON AN EXCHANGE AND BE A HOST FAMILY IN KANSAS.



LIST OF 1.5HR SESSIONS

THURS. JUNE 5TH

PLEASE REFERENCE THE FOLLOWING PAGES FOR FULL DESCRIPTION OF THE SESSIONS AND IF THERE IS ANY FEES INCLUDED WITH THE SESSION.

8:30AM SESSIONS LIST

- SHADOWS & SHAPES: AN INTRODUCTION TO STILL-LIFE DRAWING WITH CHARCOAL
- AGRONOMIC CROP AND WEED ID
- MEAT PLANNING AND BASIC COOKING SKILLS
- BASIC OF MEAT JUDGING
- UNLOCKING CAREERS: A GUIDE TO CAREER AND TECHNICAL PROBLEMS
- EXPLORING VITICULTURE
- CONTROL YOUR DESTINY: THE CHALLENGE OF CHANGE
- BLUEVILLE NURSERY AND LANDSCAPE TOUR
- BEGINNER BOWLING
- THANK-YOU NOTES, AN IMPORTANT KEY TO SUCCESS!
- DECISION: HOW DO WE MAKE THEM?
- 100 YEARS OF TEEN SLANG
- INTRO TO VIDEO EDITING AND PRODUCTION

10:15AM SESSIONS LIST

- SHAPING THE FUTURE
- WATER RIGHTS AND WATER USE IN KANSAS
- COUNTRY SWING DANCING
- AGRONOMIC CROP AND WEED ID
- BEGINNER BOWLING
- CRAFTING A FLORAL DESIGN THROUGH INTERACTIVE LEARNING
- THE FUTURE OF DRONES
- KSU COLLEGE OF VETERINARY MEDICINE TOUR
- SPARK YOUR ENTREPRENEURIAL SPIRIT: YOUTH ENTREPRENEURSHIP CHALLENGE
- BASIC OF MEAT JUDGING
- CONTROL YOUR DESTINY: THE CHALLENGE OF CHANGE
- BEGINNER PICKLEBALL
- INTRO TO VIDEO EDITING AND PRODUCTION
- DECISION: HOW DO WE MAKE THEM?
- UNLOCKING CAREERS: A GUIDE TO CAREER AND TECHNICAL PROBLEMS
- MEAT PLANNING AND BASIC COOKING SKILLS
- THANK-YOU NOTES, AN IMPORTANT KEY TO SUCCESS!
- SHADOWS & SHAPES: AN INTRODUCTION TO STILL-LIFE DRAWING WITH CHARCOAL



LIST OF 1.5HR SESSIONS THURS. JUNE 5TH

PLEASE REFERENCE THE FOLLOWING PAGES FOR FULL DESCRIPTION OF THE SESSIONS AND IF THERE IS ANY FEES INCLUDED WITH THE SESSION.

1:15PM SESSION LIST

- THE FUTURE OF DRONES
- SPARK YOUR ENTREPRENEURIAL SPIRIT: YOUTH ENTREPRENEURSHIP CHALLENGE
- WATER RIGHTS AND WATER USE IN KANSAS
- MEAT PLANNING AND BASIC COOKING SKILLS
- EXPLORING VITICULTURE
- UNLOCKING CAREERS: A GUIDE TO CAREER AND TECHNICAL PROBLEMS
- SHAPING THE FUTURE
- CRAFTING A FLORAL DESIGN THROUGH INTERACTIVE LEARNING
- INTRO TO VIDEO EDITING AND PRODUCTION
- BEGINNER PICKLEBALL
- COUNTRY SWING DANCING
- KSU COLLEGE OF VETERINARY MEDICINE TOUR
- BEGINNER BOWLING
- LEADERSHIP LESSONS LEARNED
- ENGINEERING SUSTAINABLE SOLUTIONS
- CONFIDENT COMMUNICATION
- RANGELAND ECOLOGY
- POWER UP: FUN WITH DIY SOLAR CELLS

3:00PM SESSION LIST

- CONFIDENT COMMUNICATION
- BEGINNER BOWLING
- COUNTRY SWING DANCING
- BEGINNER PICKLEBALL
- CRAFTING A FLORAL DESIGN THROUGH INTERACTIVE LEARNING
- ENGINEERING SUSTAINABLE SOLUTIONS
- SHAPING THE FUTURE
- RANGELAND ECOLOGY
- UNLOCKING CAREERS: A GUIDE TO CAREER AND TECHNICAL PROBLEMS
- MEAT PLANNING AND BASIC COOKING SKILLS



SESSION OPTIONS

Discovery Days 2025

THURS. JUNE 5TH

1.5HR SESSIONS

"SPARK YOUR ENTREPRENEURIAL SPIRIT: YOUTH ENTREPRENEURSHIP CHALLENGE"

TIME OFFERED 10:15 & 1:15

MEET FELLOW ASPIRING ENTREPRENEURS AND UNLEASH YOUR CREATIVITY, INNOVATION, AND BUSINESS EXPERTISE. LEARN ABOUT THE EXCITING OPPORTUNITIES AWAITING YOU IN THE YOUTH ENTREPRENEURSHIP CHALLENGE! GET READY TO BRAINSTORM! ENGAGE IN INTERACTIVE ACTIVITIES AND EXERCISES TO GENERATE INNOVATIVE BUSINESS IDEAS THAT SOLVE REAL-WORLD PROBLEMS AND MEET MARKET DEMANDS. LEARN THE ART OF PITCHING YOUR IDEAS WITH CONFIDENCE AND CONVICTION AND TURN YOUR PASSION INTO PROFITS THAT SUPPORTS ENTREPRENEURSHIP AND SMALL BUSINESS DEVELOPMENT IN KANSAS!

"SHADOWS & SHAPES: AN INTRODUCTION TO STILL-LIFE DRAWING WITH CHARCOAL"

MAXIMUM- 12

\$12 FEE

TIME OFFERED 8:30 & 10:15

EXPLORE THE FUNDAMENTALS OF STILL-LIFE DRAWING USING CHARCOAL IN THIS HANDS-ON INTRODUCTORY CLASS. THROUGH GUIDED WARM-UP EXERCISES, YOU'LL LEARN TO SEE AND CAPTURE SHAPE, FORM, AND LIGHT. BY THE END OF THE SESSION, YOU'LL COMPLETE A STILL-LIFE COMPOSITION, DEVELOPING CONFIDENCE IN SHADING AND CONTRAST TECHNIQUES. PERFECT FOR BEGINNERS AND THOSE LOOKING TO REFINE THEIR DRAWING SKILLS!

AGRONOMIC CROP AND WEED ID

TIME OFFERED 8:30 & 10:15

WE WILL SPEND TIME LOOKING AT REAL CROP AND WEED PLANTS GATHERED FROM AROUND THE AGRONOMY NORTH FARM. THERE WILL BE A CHANCE TO CREATE SOME CROP ART AS WELL AS LEARNING HOW TO IDENTIFY PLANTS THAT OCCUR IN THE REGION.

K-STATE
Research and Extension



MEAL PLANNING AND BASIC COOKING SKILLS

MINIMUM- 4 MAXIMUM- 10

\$40-50 FEE

TIME OFFERED 8:30, 10:15, 1:15 & 3:00

USING GROCERY STORE APPS AND DIGITAL COUPONS, ALONG WITH BUDGET AND NUTRITION PERIMETERS, PARTICIPANTS WILL PLAN A BREAKFAST, LUNCH, AND DINNER MEAL. THEN THEY WILL WORK TOGETHER TO PREPARE A SIMPLE RECIPE OR TWO AND FINALLY GET TO EAT IT WHILE WE REFLECT ON ACTIVITIES AND THINGS LEARNED, AS WELL AS BASIC MEAL ETIQUETTE.

BASICS OF MEAT JUDGING

MAXIMUM- 75

TIME OFFERED 8:30 & 10:15

IN THIS SESSION YOU WILL LEARN THE BASICS OF MEAT JUDGING. THIS IS GREAT FOR BEGINNERS INTERESTED IN A NEW JUDGING EXPERIENCE!

UNLOCKING CAREERS: A GUIDE TO CAREER AND TECHNICAL PROGRAMS

TIME OFFERED 8:30, 10:15, 1:15 & 3:00

COME FIND OUT MORE ABOUT THE EXCITING WORLD OF CAREER AND TECHNICAL EDUCATION (CTE). EXPLORE A VARIETY OF CAREER PATHWAYS THAT CTE OFFERS, GAIN AN UNDERSTANDING OF JUMP STARTING YOUR CAREER WHILE IN HIGH SCHOOL, AND EXPLORE PROFESSIONAL OPPORTUNITIES. YOU WILL LEAVE WITH A GREATER UNDERSTANDING OF CAREER AND TECHNICAL EDUCATION AND HOW IT CAN HELP YOU ACHIEVE YOUR PERSONAL AND PROFESSIONALS GOALS.

100 YEARS OF TEEN SLANG

MAXIMUM- 24

TIME OFFERED 8:30 & 10:15

IN THIS INTERACTIVE SESSION PARTICIPANTS WILL CREATE PICTURES OF THEIR OWN VOICES CALLED SPECTROGRAMS, LEARN ABOUT HOW TEXTING AND TECH IMPACT LANGUAGE, AND UNCOVER HOW TEENS IN KANSAS USED LANGUAGE TO FORM SOCIAL TIES OVER 100 YEARS AGO USING TOOLS FROM THE FIELD OF LINGUISTICS.



CONFIDENT COMMUNICATION

TIME OFFERED 1:15 & 3:00

COMMUNICATION IS NOT AN EASY SKILL BUT WHEN YOU PUT IN THE WORK IT GETS EASIER. IT IS DIFFICULT TO BE A BETTER COMMUNICATOR AND SOMETIMES YOU'RE SCARED OF GETTING UP AND PRESENTING. THIS CLASS WILL HELP YOU GET OUT OF YOUR COMFORT ZONE AND LEARN KEY COMMUNICATION SKILLS THAT WILL HELP YOU FOR THE REST OF YOUR LIFE. FROM ASKING QUESTIONS TO WHEN YOU GET THROWN INTO TALKING ABOUT A SPECIFIC TOPIC. THIS CLASS WILL BE A GUIDE FOR ALL OF YOUR COMMUNICATION ENDEAVORS, WHICH IS PRACTICALLY EVERYTHING!

SHAPING THE FUTURE

MAXIMUM- 25

TIME OFFERED 10:15, 1:15 & 3:00

ARE YOU WONDERING WHAT TO DO AFTER HIGH SCHOOL, HOW TO EXPLORE YOUR OPTIONS, AND HOW TO START EXPLORING A PROFESSIONAL CAREER IN EARLY CHILDHOOD? COME WITH YOUR MOBILE DEVICE/PHONE TO USE AS WE PLAY AN INTERACTIVE GAME, WIN PRIZES AND EVEN EXPERIENCE PLAY. KANSAS CHILD CARE TRAINING OPPORTUNITIES HAS SERVED AS THE LEADER IN KANSAS FOR HELPING EARLY CHILDHOOD PROFESSIONALS FOR NEARLY 40 YEARS. KCCTO IS LOCATED ON THE K-STATE CAMPUS AND IS PART OF THE COLLEGE OF HEALTH AND HUMAN SCIENCES. WE OFFER NON-CREDIT-BEARING COURSES FOR CERTIFICATES. MOST OF OUR COURSES ARE ONLINE ASYNCHRONOUS, AND WE ALSO OFFER LIVE VIRTUAL COURSES AND IN-PERSON OPTIONS AS WELL. DURING THIS SESSION, YOU WILL LEARN MORE ABOUT EARLY CHILDHOOD, THE MANY PROFESSIONAL CAREER PATHS THAT ARE LINKED TO THIS FIELD OF STUDY, AND HOW YOU CAN BEGIN EXPLORING NOW.

COUNTRY SWING DANCING

TIME OFFERED 10:15, 1:15 & 3:00

LEARN THE BASICS OF COUNTRY SWING DANCING, TWO-STEPPING, AND LINE DANCING IN THIS FUN AND ENERGETIC CLASS!

KSU COLLEGE OF VETERINARY MEDICINE TOUR

MINIMUM- 1 MAXIMUM- 30

TIME OFFERED 10:15 & 1:15

JOIN US FOR A TOUR OF KSU COLLEGE OF VETERINARY MEDICINE! MEET CURRENT DVM STUDENT AMBASSADORS, LEARN MORE ABOUT THE EDUCATIONAL AND CAREER OPPORTUNITIES WITHIN VETERINARY MEDICINE, AND TOUR OUR TEACHING SPACES, LABS, AND HOSPITAL!

K-STATE
Research and Extension



WATER RIGHTS AND WATER USE IN KANSAS

MINIMUM- 5 MAXIMUM- 35

TIME OFFERED 10:15 & 1:15

IN THIS ENGAGING AND INTERACTIVE ACTIVITY AND DISCUSSION, STUDENTS WILL EXPLORE HOW WATER ALLOCATION WORKS AND WILL PLAY DIFFERENT ROLES IN THE SYSTEM OF FOOD PRODUCTION AND CONSUMPTION TO LEARN ABOUT THE PRINCIPLES OF REAL-WORLD RESOURCE MANAGEMENT. PARTICIPANTS WILL DESIGN THEIR OWN FRAMEWORK FOR PRODUCING AND MONITORING FOOD.

EXPLORING VITICULTURE

TIME OFFERED 8:30 & 1:15

TOUR A WORKING, COMMERCIAL VINEYARD. DISCUSS THE LATEST RESEARCH ON CREATING NEW GRAPE VARIETIES. LEARN ABOUT GROWING CROPS THAT WE LOVE TO EAT!

ENGINEERING SUSTAINABLE SOLUTIONS

MINIMUM- 5 MAXIMUM- 20

TIME OFFERED 1:15 & 3:00

STUDENTS WILL GET HANDS-ON INTERACTION WITH BIOLOGICAL MATERIALS AND THE ENVIRONMENTAL PROCESSES THAT CAN TAKE PLACE WITHIN ECOSYSTEMS. CHANCE TO CREATE BIOPLASTICS AND TEST SOIL FOR CERTAIN QUALITIES.

DECISION: HOW DO WE MAKE THEM?

TIME OFFERED 8:30 & 10:15

EVER QUESTIONED WHY YOUR CHOICES DIFFER FROM YOUR FRIENDS' OR FAMILY'S? IN THIS SESSION, WE'LL EXPLORE YOUR PERSONAL VALUES, UNDERSTAND HOW THEY INFLUENCE YOUR DECISIONS, AND GUIDE YOU THROUGH A 7-STEP PROCESS FOR MAKING INFORMED CHOICES ABOUT YOUR FUTURE.



RANGELAND ECOLOGY

MINIMUM- 1 MAXIMUM- 20

TIME OFFERED 1:15 & 3:00

RANGE MANAGEMENT IS THE SUSTAINABLE USE OF NATURAL ECOSYSTEMS FOR MULTIPLE PURPOSES, SUCH AS LIVESTOCK GRAZING AND RECREATION. THIS FIELD OF STUDY ALSO EMPHASIZES CONSERVATION OF WILDLIFE AND NATURAL RESOURCES. IN THIS HANDS-ON FIELD EXPERIENCE, WE'LL PRACTICE RANGE MANAGEMENT SKILLS SUCH AS IDENTIFYING PRAIRIE PLANTS AND EVALUATING RANGELAND CONDITION. WE'LL ALSO DISCUSS OPPORTUNITIES AVAILABLE IN THIS EXCITING FIELD!

THE FUTURE OF DRONES

TIME OFFERED 10:15 & 1:15

INTERESTED IN AVIATION, BUT NOT NECESSARILY IN FLYING AIRPLANES? DRONES MIGHT BE OF INTEREST TO YOU! UNCREWED AIRCRAFT SYSTEMS (UAS) HAVE TAKEN OFF IN THE LAST 10 YEARS, BEING USED FOR THINGS LIKE AGRICULTURE, UTILITY INSPECTIONS, PUBLIC SAFETY, CONSERVATION, AND SO MUCH MORE. IN THIS TRACK, YOU WILL LEARN WHAT TYPES OF DRONES THERE ARE, WHAT THEY ARE USED FOR TODAY, WHAT THEY WILL BE USED FOR IN THE FUTURE, AND HOW YOU CAN GET INVOLVED IN THE INDUSTRY. THERE WILL ALSO BE TIME RESERVED FOR FLYING A DRONE!

CONTROL YOUR DESTINY: THE CHALLENGE OF CHANGE

MAXIMUM- 40

TIME OFFERED 8:30 & 10:15

DO YOU EVER WONDER WHY RESOLUTIONS DON'T WORK? OR OLD HABITS ARE HARD TO BREAK? OR EVEN WHY CHANGE DOESN'T JUST HAPPEN? "WELCOME TO THE CHALLENGE OF CHANGE" WITH DR. FRANK TRACZ, DIRECTOR OF BANDS FOR KANSAS STATE UNIVERSITY

LEADERSHIP LESSONS LEARNED

MAXIMUM- 40

TIME OFFERED 1:15

LEARN ABOUT WHAT IT TAKES TO DEVELOP INTO A STRONG LEADER. WHAT ARE SOME SKILLS AND TRAITS THAT MUST BE WORKED ON TO BE ABLE TO BE EFFECTIVE IN TAKING THE LEAD. LEARN FROM ONE OF THE BESTS WITH DR. FRANK TRACZ, DIRECTOR OF BANDS FOR KANSAS STATE UNIVERSITY



BLUEVILLE NURSERY AND LANDSCAPING TOUR

MAXIMUM- 25

TIME OFFERED 8:30

ARE YOU INTERESTED IN AND LANDSCAPING OR HORTICULTURE IN YOUR FUTURE? TOUR A LOCAL NURSERY AND LANDSCAPING BUSINESS AND LEARN ABOUT THEIR DAY TO DAY ACTIVITIES AND FUNCTIONS.

CRAFTING A FLORAL DESIGN THROUGH INTERACTIVE LEARNING

MAXIMUM- 20

\$25 FEE

TIME OFFERED 10:15, 1:15 & 3:00

LET YOUR CREATIVITY FLOW! MAKE YOUR OWN ROUND FLORAL ARRANGEMENT WITH THE PROVIDED FLOWERS AND MATERIALS.

BEGINNER BOWLING

MAXIMUM- 64

\$12 FEE

TIME OFFERED 8:30, 10:15, 1:15 & 3:00

LEARN THE BASICS OF BOWLING WHILE WORKING WITH YOUNG COLLEGE STUDENTS THAT WILL HELP YOUTH HONE THEIR SKILLS.

BEGINNER PICKLEBALL

MAXIMUM- 15

\$1 FEE

TIME OFFERED 10:15, 1:15 & 3:00

LEARN THE BASICS OF PICKLEBALL AND HAVE FUN WHILE LEARNING!



THANK-YOU NOTES, AN IMPORTANT KEY TO SUCCESS!

MINIMUM- 5 MAXIMUM- 16

TIME OFFERED 8:30 & 10:15

A WELL-WRITTEN THANK-YOU NOTE CAN MAKE A DIFFERENCE. IT CAN STRENGTHEN PERSONAL AND PROFESSIONAL RELATIONSHIPS, SHOW GENUINE APPRECIATION AND THOUGHTFULNESS, AND LEAVE A LASTING POSITIVE IMPRESSION. WE WILL LEARN THE KEY COMPONENTS OF A GOOD THANK-YOU NOTE AND TAKE THE OPPORTUNITY TO WORK ON OUR WRITING SKILLS!

POWER UP: FUN WITH DIY SOLAR CELLS

MINIMUM- 5 MAXIMUM- 25

TIME OFFERED 1:15

DISCOVER HOW SUNLIGHT IS TURNED INTO ELECTRICITY IN THIS HANDS-ON ACTIVITY. USE A KIT TO BUILD YOUR OWN SOLAR CELL, THEN POWER SOME GADGETS WITH IT. LEARN THE SCIENCE BEHIND SOLAR ENERGY AND SEE HOW IT'S CHANGING THE WORLD.

INTRO TO VIDEO EDITING AND PRODUCTION

TIME OFFERED 8:30, 10:15 & 1:15

INTERESTED IN TELLING STORIES THROUGH THE LANGUAGE OF VIDEOGRAPHY? WANT TO PARTICIPATE IN COOL CAREERS 4-H VIDEO CONTEST? LEARN THE BASICS OF THE PRE-PRODUCTION, PRODUCTION AND POST-PRODUCTION PROCESS. SEE UP-CLOSE THE AUDIO, LIGHTING AND VIDEO EQUIPMENT USED TO TELL YOUR OWN STORIES. WATCH A DEMONSTRATION OF PROFESSIONAL VIDEO EDITING SOFTWARE IN ACTION.



LIST OF HALF DAY SESSIONS THURS. JUNE 5TH

PLEASE REFERENCE THE FOLLOWING PAGES FOR FULL DESCRIPTION OF THE SESSIONS AND IF THERE IS ANY FEES INCLUDED WITH THE SESSION.

MORNING SESSION LIST

- WETLAND WONDERS
- CAMPUS COOK-OFF
- HOW CAN I BE AN ENTREPRENEUR?
- CREATE AND SHARE WITH THE HALE LIBRARY SUNDERLAND FOUNDATION INNOVATION LAB
- LET'S LIGHT IT UP
- CHUCKWAGON COOKING
- LIVE WELL, LEAD WELL
- CPR CERTIFICATION
- ELEVATE YOUR PRESENTATION SKILLS THROUGH AG EDUCATION
- KNEAD DOUGH?
- ATV SAFETY RIDING COURSE
- INTERIOR DESIGN & ARCHITECTURE
- THE EXPANDING UNIVERSE

AFTERNOON SESSION LIST

- WETLAND WONDERS
- LET'S LIGHT IT UP!
- LIVE WELL, LEAD WELL
- CPR CERTIFICATION
- CAMPUS COOK-OFF
- CHUCKWAGON COOKING
- ATV SAFETY RIDING COURSE
- DO-IT-YOURSELF CATTLE
- ELEVATE YOUR PRESENTATION SKILLS THROUGH AD EDUCATION
- THRIFTY THREADS
- BEYOND READY FOR LEADERSHIP AND REAL COLORS
- ADVANCED MEAT JUDGING
- DESIGNING THE OUTDOORS: INTO TO LANDSCAPE ARCHITECTURE



SESSION OPTIONS

Discovery Days 2025

THURS. JUNE 5TH

HALF DAY SESSIONS

KNEAD DOUGH?

MINIMUM- 8 MAXIMUM- 16

TIME OFFERED MORNING ONLY

HAVE YOU EVER WONDERED IF THE INGREDIENTS IN YOUR BAKED PRODUCT REALLY MATTER? JOIN US TO REVEAL SOME OF THE SCIENCE INVOLVED IN BAKING. YOU WILL MIX, SHAPE, AND BAKE VARIOUS BAKED GOODS THAT CAN BE TAKEN HOME.

WETLAND WONDERS

MINIMUM- 5 MAXIMUM- 16

TIME OFFERED MORNING & AFTERNOON

WETLANDS IN KANSAS? KANSAS IS HOME TO THE LARGEST WETLAND IN THE UNITED STATES - CHEYENNE BOTTOMS. EXPLORE HOW WETLANDS ARE PRODUCTIVE ECOSYSTEMS BY COMPARING SAMPLES OF PLANTS, ANIMALS, SOIL, AND WATER TAKEN FROM CHEYENNE BOTTOMS WITH SAMPLES FOUND ON CAMPUS. PARTICIPANTS WILL ACTUALLY GET IN THE WATER OF CAMPUS CREEK TO TEST WATER SAMPLES AND COLLECT AQUATIC INVERTEBRATES.

CAMPUS COOK-OFF

MAXIMUM- 16

\$10 FEE

TIME OFFERED MORNING & AFTERNOON

DO YOU HAVE WHAT IT TAKES TO SURVIVE ADULTING? WHETHER YOU PLAN TO HEAD TO COLLEGE, TECHNICAL SCHOOL OR START WORKING AFTER HIGH SCHOOL, YOU WILL NEED TO EAT EVERY DAY TO SURVIVE. ARE YOU REALLY READY TO TAKE ON THIS CHALLENGE? THIS CLASS WILL GO ON A GROCERY STORE TOUR TO LEARN THRIFTY SHOPPING SECRETS. THEN TEAMS WILL GET TO SHOP FOR INGREDIENTS FOR A REAL-WORLD SCENARIO FOR THE COOKING COMPETITION BEFORE HEADING BACK TO CAMPUS TO LEARN KITCHEN SURVIVAL SKILLS AND HAVE THE COOKING, JUDGING AND EATING PORTIONS OF THE FRIENDLY CONTEST.



BEYOND READY FOR LEADERSHIP WITH REAL COLORS

\$20 FEE

TIME OFFERED AFTERNOON ONLY

HAVE YOU SOMETIMES WONDERED WHY YOU THINK AND ACT THE WAY YOU DO? HAVE YOU NOTICED THAT YOU RESPOND BETTER TO CERTAIN COMMUNICATION STYLES THAN OTHERS? THE REAL COLORS PERSONALITY INSTRUMENT IS A TOOL TO HELP YOUTH DETERMINE WHO YOU ARE AND WHY YOU DO THE THINGS YOU DO. IT ALSO GIVES A DEEP UNDERSTANDING OF OTHERS AND HOW SIMPLE ADJUSTMENTS TO LEADERSHIP AND COMMUNICATION CAN HAVE A GREAT EFFECT ON PEOPLE AROUND YOU. YOU WILL GROW THROUGH THE APPLICATION OF COMMUNICATION AND LEADERSHIP SKILLS GAINED AS YOU TAKE WHAT YOU HAVE LEARNED AND APPLY IT THROUGH EXERCISES AND GAMES WHICH HELP YOU BECOME BEYOND READY FOR LIFE.

HOW CAN I BE AN ENTREPRENEUR?

MINIMUM- 10 MAXIMUM- 30

\$25 FEE

TIME OFFERED MORNING ONLY

YOUTH WILL UNDERSTAND THEIR ENTREPRENEURSHIP TALENTS AND HOW TO APPLY THEM IN PLANNING AND BUILDING A BUSINESS.

YOUTH WILL APPLY THEIR TALENTS AND COMMUNICATION SKILLS AS THEY BUILD A PROTOTYPE OF A PRODUCT TO BEGIN THEIR "BUSINESS"

CREATE AND SHARE WITH THE HALE LIBRARY SUNDERLAND FOUNDATION INNOVATION LAB

MINIMUM- 5 MAXIMUM-15

TIME OFFERED MORNING ONLY

IN THIS WORKSHOP YOU WILL DEMONSTRATE THE SKILLS YOU HAVE LEARNED IN 4H BY CRAFTING IN THE INNOVATION LAB AND MAKE A VIDEO TO DEMONSTRATE WHAT YOU HAVE LEARNED AND CREATED. THINK OF IT AS A WAY TO SHOW OFF THE SKILLS YOU DEVELOP IN 4-H AND USING THE VIDEO TO RECRUIT MORE YOUTH TO JOIN.

ADVANCED MEAT JUDGING

MAXIMUM- 75

TIME OFFERED AFTERNOON ONLY

IN THIS SESSION EXPECT TO TAKE A DEEPER DIVE INTO MEAT JUDGING TO PREPARE FOR FUTURE CONTESTS. YOU WILL REFINE YOU REASONS, NOTE TAKING, AND GET PRACTICE ON DIFFERENT CLASSES.



DO-IT-YOURSELF-CATTLE

MAXIMUM- 35

TIME OFFERED AFTERNOON ONLY

IN THIS WORKSHOP, YOU WILL LEARN MORE ABOUT THE ANATOMY AND PHYSIOLOGY OF THE FEMALE BOVINE REPRODUCTIVE SYSTEM WITH HANDS-ON EXPERIENCE WITH REPRODUCTIVE TRACTS, AS WELL AS WITH THE DIFFERENT REPRODUCTIVE TECHNOLOGIES USED IN AND OUT OF THE LAB. STUDENTS WILL HAVE THE CHANCE TO LOOK AT REAL PREGNANT AND NON-PREGNANT REPRODUCTIVE TRACTS DERIVED FROM SLAUGHTERHOUSE, LEARN HOW TO HANDLE, AND THAW BOVINE SEMEN AND LOAD ARTIFICIAL INSEMINATION GUN. STUDENTS WILL ALSO LEARN HOW THESE TECHNOLOGIES CONNECT TO REAL WORLD PRODUCERS AND THEIR CATTLE. BE PREPARED TO GET DIRTY! YOU WILL MOST LIKELY NEED A SHOWER AFTER THIS WORKSHOP! THE USE OF COVERALLS, FARM CLOTHES, AND RUBBER BOOTS ARE EXTREMELY ENCOURAGED.

DESIGNING THE OUTDOORS: INTRO TO LANDSCAPE ARCHITECTURE

MINIMUM- 5 MAXIMUM- 15

\$25 FEE

TIME OFFERED AFTERNOON ONLY

EVER DREAMED OF DESIGNING THE PERFECT PARK, ROOFTOP GARDEN, OR BACKYARD OASIS? IN THIS HANDS-ON COURSE, YOU'LL STEP INTO THE WORLD OF LANDSCAPE ARCHITECTURE—WHERE CREATIVITY MEETS NATURE! YOU'LL SKETCH, MODEL, AND PLAN OUTDOOR SPACES THAT ARE BEAUTIFUL, FUNCTIONAL, AND ECO-FRIENDLY. LEARN HOW TO USE NATIVE PLANTS, CREATE SPACES FOR PEOPLE AND WILDLIFE, AND BRING YOUR IDEAS TO LIFE THROUGH A REAL DESIGN PROJECT. WHETHER YOU'RE INTO ART, SCIENCE, OR JUST LOVE BEING OUTSIDE, THIS COURSE IS YOUR CHANCE TO SHAPE THE WORLD—ONE LANDSCAPE AT A TIME!

LET'S LIGHT IT UP!

MINIMUM- 10 MAXIMUM-20

\$10 FEE

TIME OFFERED MORNING & AFTERNOON

LET'S LIGHT IT UP! - 'SPARK' YOUR INTEREST IN ELECTRONICS WITH A TAKE-HOME LAMP PROJECT THAT WILL LIGHT UP YOUR WORLD! JOIN US FOR AN EXCITING, HANDS-ON WORKSHOP WHERE YOU WILL DIVE INTO THE WORLD OF WIRING AND CIRCUITS TO REPURPOSE A LAMP. GET FAMILIAR WITH ESSENTIAL TOOLS LIKE WIRE STRIPPERS, SCREWDRIVERS, SOLDERING GUNS AND MORE TO UNDERSTAND THE BASICS OF WIRING AND CIRCUITS. THIS ISN'T JUST A LECTURE – ROLL UP YOUR SLEEVES AND CREATE YOUR VERY OWN SMALL TABLE LAMP TO SHOWCASE YOUR NEW SKILLS AND TAKE HOME TO ENJOY. WE WILL EXPLORE EXCITING CAREER OPPORTUNITIES IN THE FIELD OF ELECTRICITY AND ELECTRONICS. DON'T MISS OUT ON THIS ELECTRIFYING OPPORTUNITY TO LEARN, CREATE, AND HAVE FUN! ENROLL IN THE ELECTRIC & RENEWABLE ENERGY PROJECT AND TAKE YOUR LAMP TO YOUR LOCAL COUNTY FAIR!



LIVE WELL, LEAD WELL

MINIMUM- 10 MAXIMUM- 40

TIME OFFERED MORNING & AFTERNOON

GET BEYOND READY TO TAKE CHARGE OF YOUR HEALTH AND LEADERSHIP SKILLS DURING THE LIVE WELL, LEAD WELL INTERACTIVE, HANDS-ON WORKSHOP. YOU WILL BOOST YOUR ENERGY AND FOCUS WITH YOGA AND BREATHING TECHNIQUES, DISCOVER HOW TO CALCULATE RESTING AND TARGET HEART RATES, FEEL GOOD BY CREATING CONVERSATION ROCKS TO SPREAD POSITIVITY AND KINDNESS, AND ENJOY A TASTY SMOOTHY USING HEALTHY INGREDIENTS. CONTINUE YOUR HEALTHY LIVING JOURNEY BY RECEIVING A TOOL KIT WITH A YOGA MAT, SHAKER CUP AND MORE TO SHARE THESE AWESOME ACTIVITIES WITH YOUR CLUB AND COMMUNITY. LET'S MAKE HEALTHY LIVING FUN AND INSPIRING TOGETHER!

ATV SAFETY RIDING COURSE

MAXIMUM- 8

\$20 FEE

TIME OFFERED MORNING & AFTERNOON

THE ATV SAFETY RIDER COURSE PROVIDES A FAST-PACED HANDS-ON ATV SESSION THAT INCLUDES PRE-RIDE INSPECTION, STARTING AND STOPPING, QUICK TURNS, HILL RIDING, EMERGENCY STOPPING AND SWERVING, RIDING OVER OBSTACLES, AND MORE. YOU WILL BE PROVIDED WITH A LOANER ATV, HELMET, GOGGLES, AND GLOVES. PERSONAL GOGGLES, GLOVES, AND DOT OR SNELL-RATED HELMETS MAY BE USED. YOU WILL NEED TO WEAR A LONG-SLEEVED SHIRT OR JACKET, LONG PANTS, AND OVER-THE-ANKLES BOOTS. THERE WILL BE SOME ONLINE INSTRUCTION THAT NEEDS TO BE COMPLETED PRIOR TO CLASS. CLASS SIZE IS LIMITED TO 8 PER SESSION.

CHUCKWAGON COOKING

MINIMUM- 5 MAXIMUM-12

\$25 FEE

TIME OFFERED MORNING & AFTERNOON

HAVE YOU EVER WATCHED THE ORIGINAL "THE COWBOYS" MOVIE WITH JOHN WAYNE OR "LONESOME DOVE" AND WONDERED WHAT IT WOULD BE LIKE TO LIVE AND WORK ON A CATTLE DRIVE? THIS 3-HOUR COURSE IS DESIGNED TO GIVE PARTICIPANTS A GENERAL IDEA HOW COWBOYS LIVED AND ATE WHILE HERDING CATTLE FROM TEXAS TO KANSAS. PARTICIPANTS WILL LEARN THE BASIC PARTS OF A CHUCKWAGON, THE HISTORICAL SIGNIFICANCE OF THE ITS DESIGNED, AND WHY IT IS AN IMPORTANT PART OF KANSAS CATTLE HISTORY. PARTICIPANTS WILL ALSO LEARN ABOUT CAST IRON POTS "DUTCH OVENS" AND WILL USE THEM TO PREPARE A SIMPLE MEAL THAT WILL BE ENJOYED BY ALL WHEN FINISHED. PREVIOUS PARTICIPANTS ARE ASKED TO SELECT A DIFFERENT CLASS, SO NEW PARTICIPANTS HAVE THE OPPORTUNITY TO TAKE THIS CLASS.



CPR

MINIMUM- 4 MAXIMUM- 12

\$75 FEE

TIME OFFERED MORNING & AFTERNOON

IS WORKING IN THE HEALTH FIELDS YOUR CALLING? MAYBE YOU ARE GOING TO BE A BABYSITTER OR WORK WITH YOUNG CHILDREN THIS SUMMER. YOUTH CAN LEARN ABOUT AND BECOME CERTIFIED IN CPR/FIRST AIDE. ALSO LEARN TO PROPERLY USE AN AED DEFIBRILLATOR ETC.

ELEVATE YOUR PRESENTATION SKILLS THROUGH AG EDUCATION

MINIMUM- 10 MAXIMUM-30

TIME OFFERED MORNING & AFTERNOON

DO YOU WANT TO LEVEL UP YOUR PUBLIC SPEAKING SKILLS? MAYBE YOU LOVE WORKING WITH KIDS OR TALKING ABOUT AGRICULTURE. OR MAYBE YOU WANT TO LEARN ABOUT ALL OF THE ABOVE. THIS HALF-DAY SESSION IS FOR YOU! WE'LL TEACH YOU PRESENTATION SKILLS, GO THROUGH HANDS ON ACTIVITIES AND GIVE YOU AN OPPORTUNITY TO PRACTICE YOUR SKILLS AND DEVELOP YOUR CONFIDENCE IN FRONT OF A CROWD.

THE EXPANDING UNIVERSE

TIME OFFERED MORNING ONLY

ABOUT 100 YEARS AGO WE LEARNED THAT THE UNIVERSE IS EXPANDING – THE SO-CALLED BIG BANG. BHARAT RATRA WILL DISCUSS THE DIFFERENCES IN THE DISTRIBUTION OF MATTER ON LARGE SPATIAL SCALES AND SMALL SPATIAL SCALES AND THE RELATIVE STRENGTHS OF THE GRAVITATIONAL AND ELECTRIC FORCES ON LARGE AND SMALL SPATIAL SCALES THAT, IN EINSTEIN'S GENERAL THEORY OF RELATIVITY, RESULTS IN THIS OBSERVED COSMOLOGICAL EXPANSION

INTERIOR DESIGN & ARCHITECTURE

MAXIMUM-30

TIME OFFERED MORNING ONLY

COME AND EXPLORE THE WORLD OF ARCHITECTURE AND INTERIOR DESIGN! STUDENTS WILL HAVE THE OPPORTUNITY TO INVESTIGATE CAREER PATHWAYS IN DESIGN AS WELL AS LEARN COMMON DESIGN TERMS AND TOOLS. HANDS-ON ACTIVITIES ALLOW YOU TO PUT YOUR KNOWLEDGE TO THE TEST BY EXPERIMENTING WITH COLOR AND MATERIALITY AS WELL AS FORM AND SPACE THROUGH COLLAGE AND MODEL-BUILDING! ARCHITECTURAL FOCUS: MARBLE ENCLOSURE, INTERIOR DESIGN FOCUS: COLLAGE/DIORAMA STUDENTS ARE WELCOME TO BRING THEIR IN-PROGRESS STATE FAIR PROJECTS FOR FEEDBACK, OR MAY RECEIVE GUIDANCE ON HOW TO GET STARTED.



THRIFTY THREADS

\$25 FEE

TIME OFFERED AFTERNOON ONLY

LET'S GO SHOPPING! YES, DURING THIS CLASS, YOU GET TO GO SHOPPING IN THE LOCAL THRIFT STORES IN MANHATTAN. JOIN US AND LEARN TECHNIQUES ON HOW TO SHOP ON A LOW BUDGET AND WHAT TO LOOK FOR. YOUR TASK FOR THE AFTERNOON IS TO BRING \$25.00 WITH YOU TO GO SHOPPING. YOU WILL CHOOSE AND PURCHASE AN OUTFIT AND ACCESSORIES TO MAKE A COMPLETE OUTFIT FOR \$25.00 OR LESS. THEN WE WILL RETURN TO CAMPUS WHERE YOU WILL MODEL YOUR OUTFIT FOR JUDGES. IF YOU WIN THE BEST OUTFIT FOR THE COST YOU PAID, YOU WILL WIN A PRIZE.

